



Wayland-ivi-extension handson

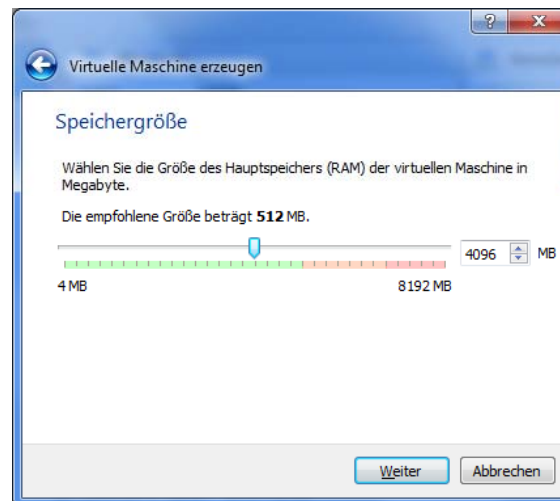
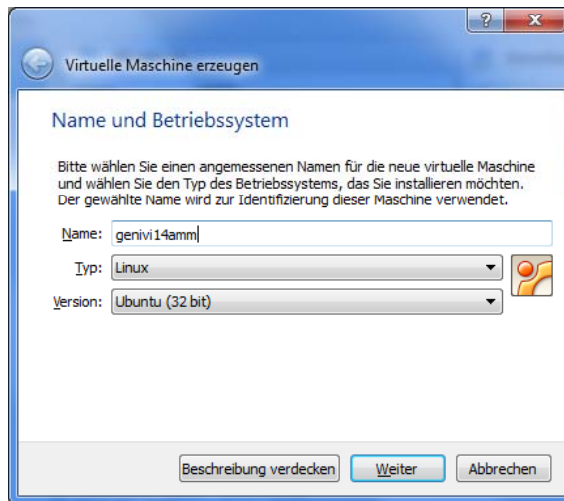
28.04.2016/ 14:00

Eugen Friedrich
Software engineer
ADIT

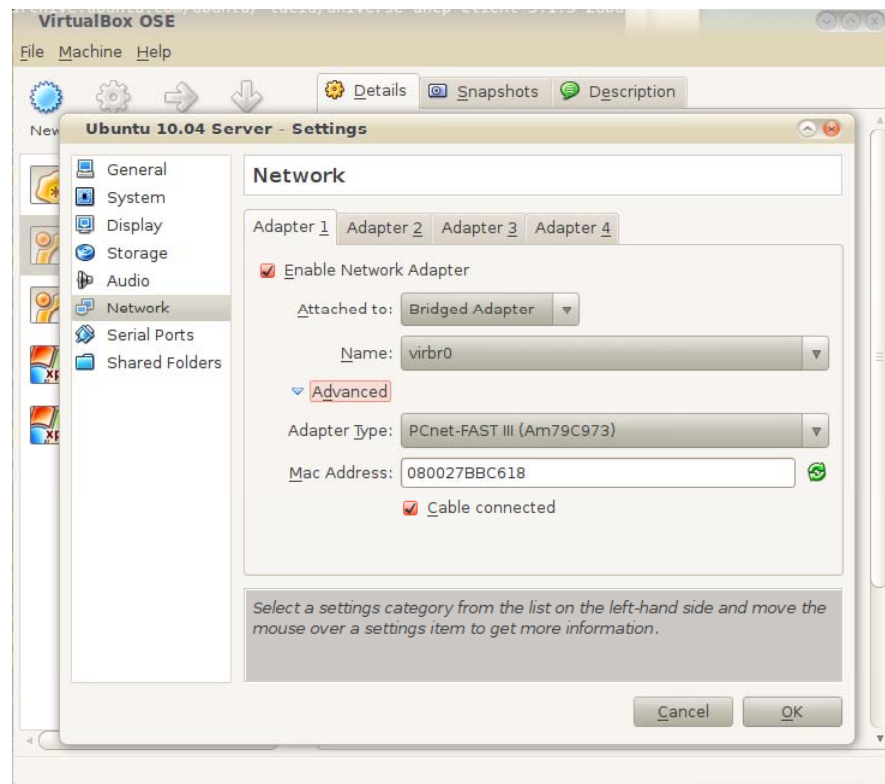
5-Oct-15

GENIVI is a registered trademark of the GENIVI Alliance in the USA and other countries
Copyright © GENIVI Alliance 2016

- Copy „Ubuntu 14.04.4 (32bit).vdi“ to you pc
- Setup the vbox image

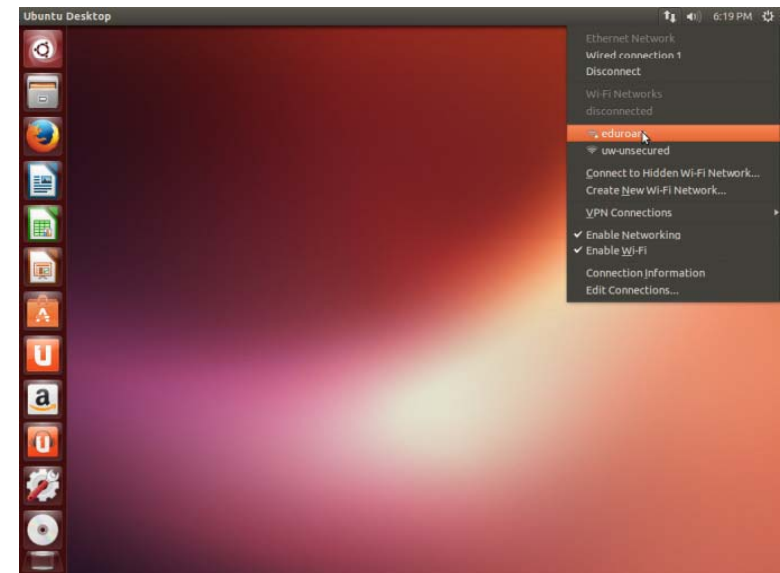


Vbox setup



In the vbox

- Start the vbox image
- Login
- Setup the eth0 interface
 - Choose “porter-connection”





In the vbox

- Open terminal
- Start eclipse
- glmark2
 - build with eclipse
 - deploy to board with `deploy-to-porter.sh`
In `/home/genivi/software/glmark2`
- Start glmark2
 - use “ssh [root@192.168.0.31](https://192.168.0.31)” (or “ssh root@\$T”) for connection
 - `layer-add-surfaces 1000 1 &`
 - `glmark2-es2-wayland`

Vbox image:
user: genivi
pass: ivi
IP: 192.168.0.1
ssh root@\$T

Porter board:
user: root
pass: root
IP: 192.168.0.31



In the vbox

- very-basic-hmi
 - build very-basic-hmi project
 - Modify it for you needs
 - deploy to board with `deploy-to-porter.sh`
In `/home/genivi/software/layer-add-surfaces`
- Start very-basic-hmi
 - Ssh to porter board
 - `./very-basic-hmi`

Vbox image:
user: genivi
pass: ivi
IP: 192.168.0.1
ssh root@\$T

Porter board:
user: root
pass: root
IP: 192.168.0.31



Vbox image:
user: genivi
pass: ivi
IP: 192.168.0.1
ssh root@\$T

Porter board:
user: root
pass: root
IP: 192.168.0.31